

SUMMATIVE ASSESSMENT

INTRODUCTORY STUDIES FOR PROJECT MANAGERS

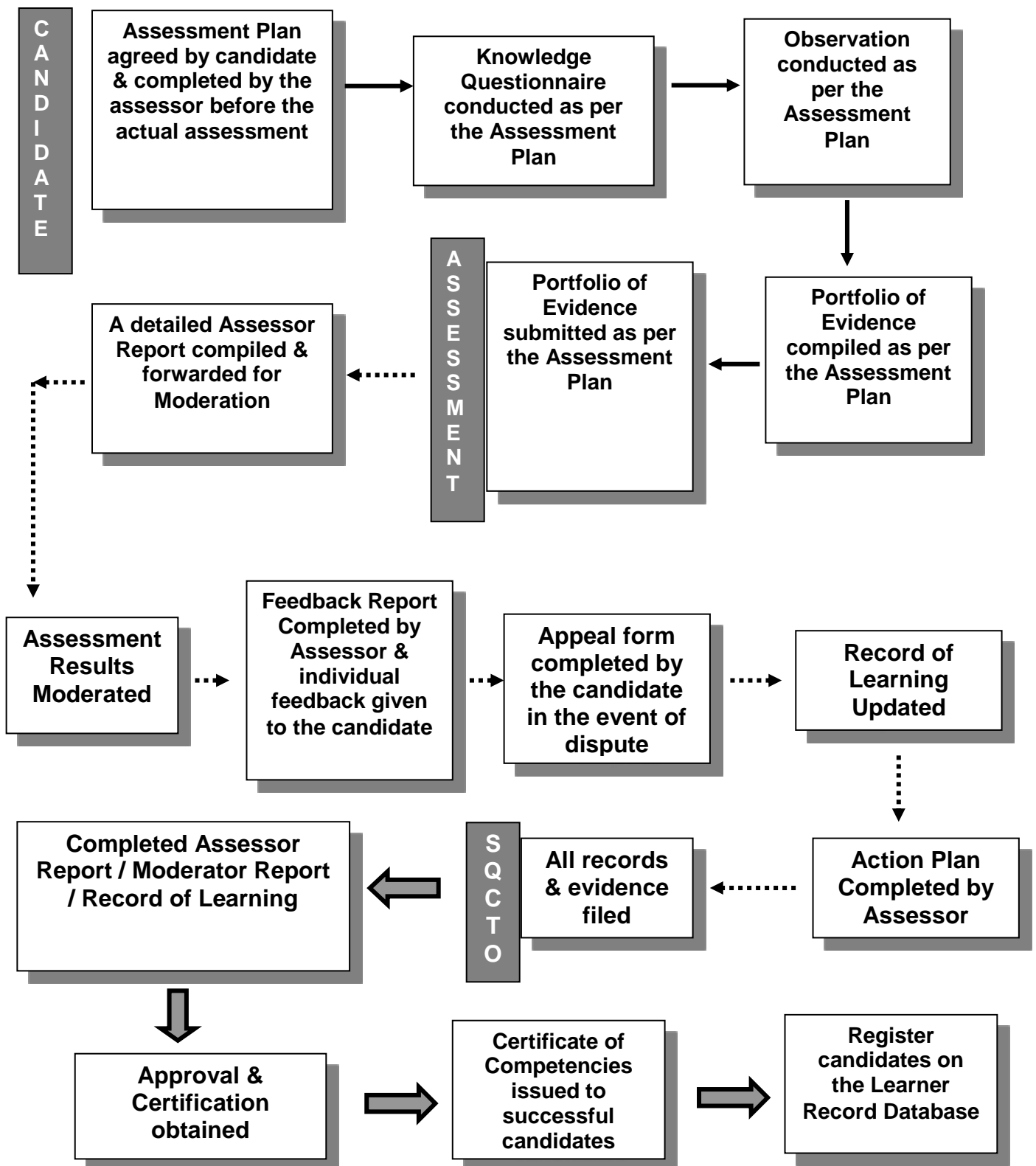
MODULE #: 121905000-KM-01

NQF LEVEL: 5

CREDITS: 4

NOTIONAL HOURS: 40

ASSESSMENT PROCESS FLOW



AGREED ASSESSMENT PLAN

Candidate's Name:			
Assessor's Name:			
Standard Title:	INTRODUCTORY STUDIES FOR PROJECT MANAGERS		
EVENT	DATE, TIME AND LOCATION	RESOURCES REQUIRED	EVIDENCE TO BE GENERATED
Attend Training		Training material, equipment as specified	Attendance Register
Complete formative assessment		Formative workbook	Completed formative workbook
Complete summative assessment		Summative workbook	Completed knowledge questionnaire

Signature of Candidate: _____

Signature of Assessor: _____

Date: _____

Answer the following questions;

Question 1 (KM-01- KT0104, KM-01 KT0105)

You are required to visit any college of your choice and ask how they deliver their project management qualification and how they assess the final assessment.

Attach your findings in the POE

This image shows a single sheet of white paper with horizontal ruling lines. The lines are evenly spaced and run across the width of the page. There are no margins, text, or other markings on the paper.

Question 2 (KM-02- KT0202)

- I. What is a project portfolio?[1]
- II. *Define Project Portfolio Management (PPM)* [2]

Question 3 (KM-02- KT0203)

What is Operations Management and give a clear example of any operational management?[6]

Question 4. (KM-02- KT0204)

- I. Define the Value Triple Constraint [3]
- II. Write a summary of the Value Triple Constraint **Tracking Four Distinct Phases** [10]